

Deliverable 9.2

SWIP website

Date: December, 2013

Prepared by: CIRCE

SWIP – New innovative solutions, components and tools for the integration of wind energy in urban and peri-urban areas

Grant Agreement: 608554

From October 2013 to January 2017

www.swipproject.eu

"This project has received funding from the European Union's Seventh Programme for research, technological development and demonstration under grant agreement No 608554"




	Document:	9.2 SWIP website		
	Author:	CIRCE		Version: 1
	Reference:	D9.2		Date: 23/12/13

Disclaimer of warranties and limitation of liabilities

This document has been prepared by SWIP project partners as an account of work carried out within the framework of the EC-GA contract no 608554.

Neither Project Coordinator, nor any signatory party of SWIP Project Consortium Agreement, nor any person acting on behalf of any of them:

- (a) makes any warranty or representation whatsoever, express or implied,
 - (i). with respect to the use of any information, apparatus, method, process, or similar item disclosed in this document, including merchantability and fitness for a particular purpose, or
 - (ii). that such use does not infringe on or interfere with privately owned rights, including any party's intellectual property, or
 - (iii). that this document is suitable to any particular user's circumstance; or
- (b) assumes responsibility for any damages or other liability whatsoever (including any consequential damages, even if Project Coordinator or any representative of a signatory party of the SWIP Project Consortium Agreement, has been advised of the possibility of such damages) resulting from your selection or use of this document or any information, apparatus, method, process, or similar item disclosed in this document.

	Document:	9.2 SWIP website		
	Author:	CIRCE		Version: 1
	Reference:	D9.2		Date: 23/12/13

Document info sheet

Document Name: SWIP website
 Responsible Partner: CIRCE
 WP: 9. Dissemination and exploitation
 Task: 9.2 Promotional material
 Deliverable n°: 9.2
 Version: 1
 Version Date: 18/12/2013

Diffusion list


Public

Approvals

	Company
Author/s	CIRCE
Task Leader	CIRCE
WP Leader	CIRCE

Documents history

Revision	Date	Main modification	Author
1	18/12/2013	Core of the document	CIRCE
2	23/12/2013	Review	CIRCE

	Document:	9.2 SWIP website		
	Author:	CIRCE		Version: 1
	Reference:	D9.2		Date: 23/12/13

Executive Summary

The present document contents the summary of the features main characteristics of SWIP project website, as well as the measures taken into account in order to ensure its creation, its definition and its proper maintenance during the whole project lifecycle.

The website is developed under WP9 framework, “Dissemination and exploitation”. Concretely, it is the output from task 9.2, “Promotional material” and its associated deliverable “D9.2: SWIP website”, as shown in Figure 1.

The nature of this deliverable is not thought to be a report, however, the present work has been deployed as an explanation document in which are detailed the main features of the project’s website and its associated intranet, and how they will be useful to facilitate the communication and document sharing between the consortium, and therefore, project success.

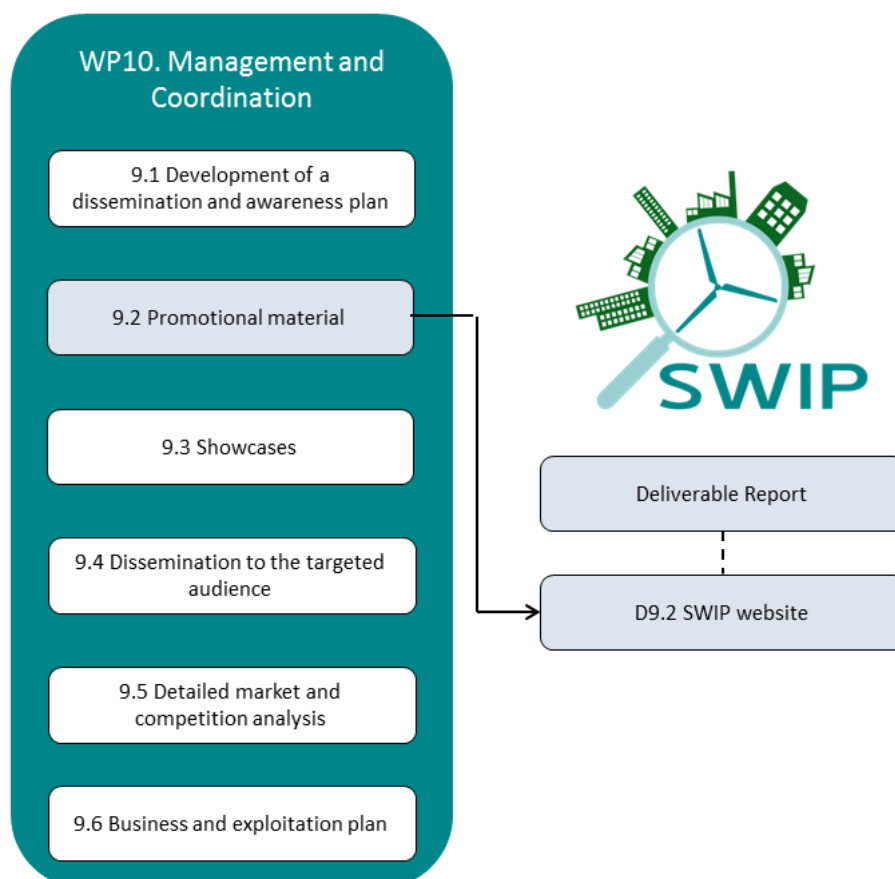


Figure 1. Situation of D9.2 in the project

	Document:	9.2 SWIP website		
	Author:	CIRCE		Version: 1
	Reference:	D9.2	Date:	23/12/13

1	Introduction.....	6
2	Public website	7
2.1	Homepage.....	7
2.2	The Project	8
2.3	Partners.....	10
2.4	Demo Sites	10
2.5	Publications.....	11
2.6	News & Events	12
2.7	Links	12
3	Website's Intranet.....	13
3.1	Homepage.....	13
3.2	Controlling.....	14
3.2.1	Status	14
3.2.2	Report monitor	14
3.2.3	Deliverables	15
3.2.4	Budget.....	15
3.2.5	Resources.....	15
3.2.6	Report/Review schedule.....	16
3.2.7	Project.....	16
3.3	Reporting	16
3.3.1	Progress	16
3.3.2	Resources.....	16
3.3.3	Costs	17
3.3.4	Deliverables	17
3.3.5	Milestones	17
3.3.6	Dissemination	17
3.3.7	Cooperation	18
3.4	Finances	18
3.4.1	EC Payments	18
3.4.2	Payments to Contractors	18
3.4.3	Payments Summary	18
3.5	Collaboration.....	19
3.5.1	Contacts.....	19
3.5.2	E-mail	19
3.5.3	Forum	20
3.5.4	Groups	20
3.5.5	Links	20
3.6	Documents.....	20
3.7	Calendar	21
4	Conclusions.....	22

	Document:	9.2 SWIP website		
	Author:	CIRCE		Version: 1
	Reference:	D9.2		Date: 23/12/13

1 Introduction

Through SWIP Platform Website, the project will synthesize its knowledge and present it thematically to readers and targeted audience. In this way, the project is developing its knowledge network and offering to be a node of information. SWIP website will be an interactive media that will give access to the objectives, partnership, activities, events and all aspects related to the Small and Medium size Wind Turbines (SMWT) and best practices and recommendations gathered from the project development.

CIRCE has been responsible for the creation and will be responsible for the maintenance of SWIP website, relying on the support and contribution of the rest of partners. The website will be the main communication tool of the project, where all the dissemination materials will be published in a timely manner.

The website is an interactive environment that gives access to all the aspects related to the technology development, the monitoring of the status of the pilots and the final results.

It also includes an overview of the concept, objectives, the partnership and the activities proposed within the SWIP project. The project results will be also an important aspect to be published.

On the other hand, the website also counts with a private area or intranet that is already used as a collaborative working space for developing the project.

All in all, the website will be the virtual collection of the project documents, where all the key deliverables will be easily accessed as the first step for all dissemination.

	Document:	9.2 SWIP website		
	Author:	CIRCE		Version: 1
	Reference:	D9.2		Date: 23/12/13

2 Public website

The structure of the website is composed by a friendly environment design, accessible to all type of users. Mainly, it is composed by a home page which contains the main menu. This menu shows information structured in different levels of importance, and, in this way, the hierarchy of the information is clear for the user and shown in the same page. The main sections of the public site and their features are described in the following points.

2.1 Homepage

The home page contains the main menu bar, a slideshow with images and short descriptions related with the project, two highlighted sections: SWIP project overview and Project partners with images of the partners' logotypes. In the upper part of the site there are the legal, privacy, contact data, sitemap and Intranet.

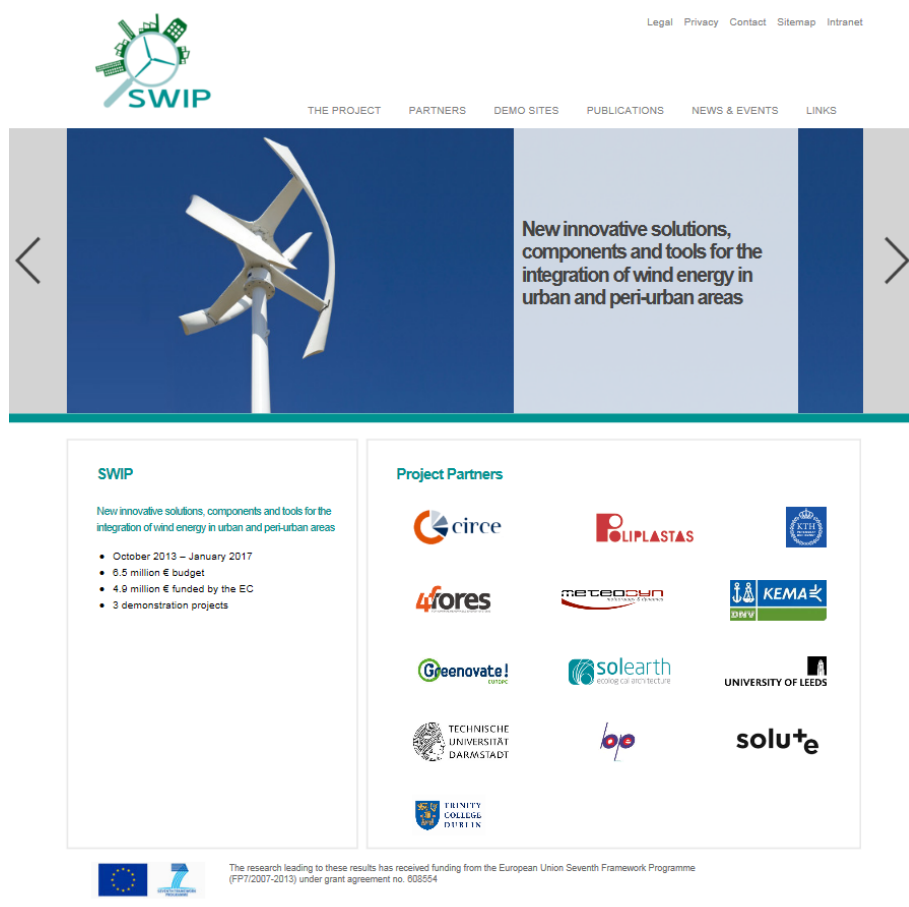


Figure 2. Website's Homepage

At the middle of the website, the main menu bar is placed. It allows the user to move easily through the site and can lead him to the following sections, as seen in Figure 2 :


	Document:	9.2 SWIP website		
	Author:	CIRCE		Version: 1
	Reference:	D9.2		Date: 23/12/13

- The project
- Partners
- Demos Sites
- Publications
- News & Events
- Links

2.2 The Project

This section offers the main information of the project. It is composed by the next sections:

- The Challenges: Explains the main barriers that the project has to overcome in order successfully achieve his objectives.
- Objectives & Summary: Gives an overview of the project and explains its main objectives.



Legal Privacy Contact Sitemap Intranet


THE PROJECT PARTNERS DEMO SITES PUBLICATIONS NEWS & EVENTS LINKS

Current Scenario

The Wind Energy Roadmap, which was published by the European Commission (EC) on October 7th, 2009, and was presented and discussed at the Strategic Energy Technology Plan (SET-Plan) workshop, will play a key role in fighting climate change and in helping EU Member States to meet the 2020 targets identified by the new RES Directive of December 2008, which sets the following goals for the wind energy sector:

- A wind energy penetration level of 20% in 2020.
- Onshore wind power fully competitive in 2020.
- 250.000 new skilled jobs created in the EU by the wind energy sector in the 2010 – 2020 period.


Currently, the major application of wind power is electricity generation from large grid-connected wind farms. However, following the changing trend of the energy sector from a centralized energy system to a distributed one, small wind systems and its hybrid applications are expected to play an increasingly important role in the forthcoming years, meaning a higher share in the energy generation. With the support of the smart grid technology and fostered by the directives and regulation associated to the sector, small wind turbines (SWTs) can now be connected to the electrical grid from the consumer-end and, little by little, contribute to the stabilization of the electrical grid. Due to this fact, small-scale wind energy has now been applied in fields such as mobile communication base stations, offshore aquaculture, agricultural and farming and sea-water desalination, among others, in several countries. Besides this scenario, the integration of small wind energy in urban and peri-urban areas is being a challenge due to the barriers the technology has at this stage of development.



Concept

The main objective of the SWIP project is to develop and validate innovative solutions for small and medium size wind turbines to improve their competitiveness, enabling and facilitating the integration and deployment into urban and peri-urban areas.

The new and innovative solutions will address the current barriers (turbulence, noise, vibration, aesthetic aspect, cost of technology, wind resource assessment, wind market, user friendliness, social acceptance and safety) that delay the market uptake of this technology. These solutions will: reduce the costs of the electric generator of wind turbines, providing two new concepts for energy generation; increase the Cp ratio of the blades, so that the number of hours that the SWT is producing increases by 9%, highly softening or even eliminating the mechanical and acoustic noise they currently produce; reduce the maintenance costs of the SWTs up to 40% by including two innovative elements (SCADA for preventive maintenance and magnetic gearbox) in the SWTs and improving the integration of the wind turbines in buildings and districts with more aesthetic solutions.



The project will develop three different prototypes to be integrated in three different scenarios (new energy efficient building, shore-line and industrial area), to validate the solutions and goals aimed, providing scalable solutions for different applications, covering several user needs.

Moreover, the project will improve the current methodologies for wind resource assessment into urban and peri-urban areas, reducing the RMS error in wind speed estimation until 8%, minimizing the risk and the opportunity costs of the small and medium size wind turbines when they are integrated in these environments.

SWIP Project will last 3 years and 8 months and is coordinated by CIRCE. Altogether, the project involves 13 partners from 10 different countries in the EU, covering the most relevant stakeholders: six SME, one large industry, five research centres and one public authority.

© 2013

Figure 3. Objectives & summary section

- Expected Results: Presents the main results that the project is committed to achieve.

	Document:	9.2 SWIP website		
	Author:	CIRCE		
	Reference:	D9.2	Version:	1
			Date:	23/12/13

- **Budget and Funding:** Explains the main scheme of the SWIP project as well as the Budget of the project and the part of the Budget funded by the EC.
- **Work Package structure:** Gives an overview of the interrelation between the project WPs. It also allows accessing to their main objective as well as their specific objectives by clicking in its corresponding icons.



Figure 4. Work Package structure section

- **Timeline:** Shows the milestones of the project and place them within its corresponding due date.

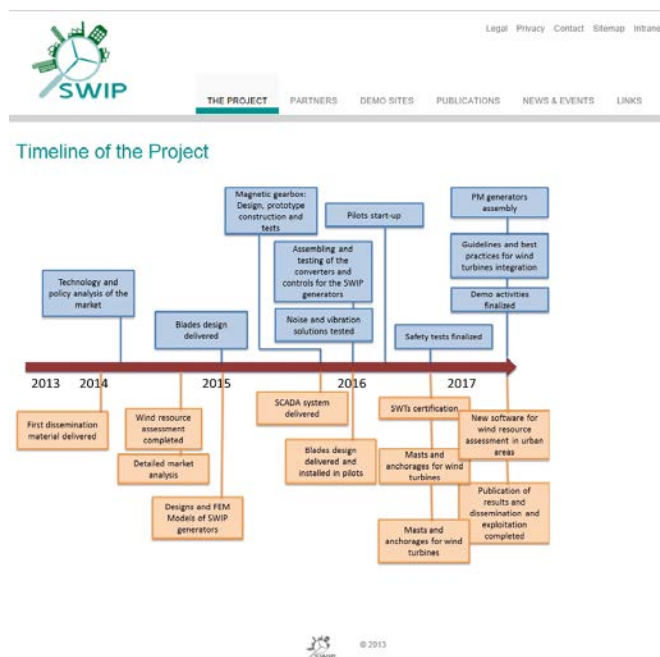


Figure 5. Timeline of the project

	Document:	9.2 SWIP website		
	Author:	CIRCE		Version: 1
	Reference:	D9.2		Date: 23/12/13

2.3 Partners

This section is broken down into two sub-sections:

- SWIP Consortium: Shows the geographic location of the different partners throughout Europe (See Figure 6).
- Partners information: Shows all partners of the project with its Webpage. Additionally, all organizations have a button to access to the description of their organization.

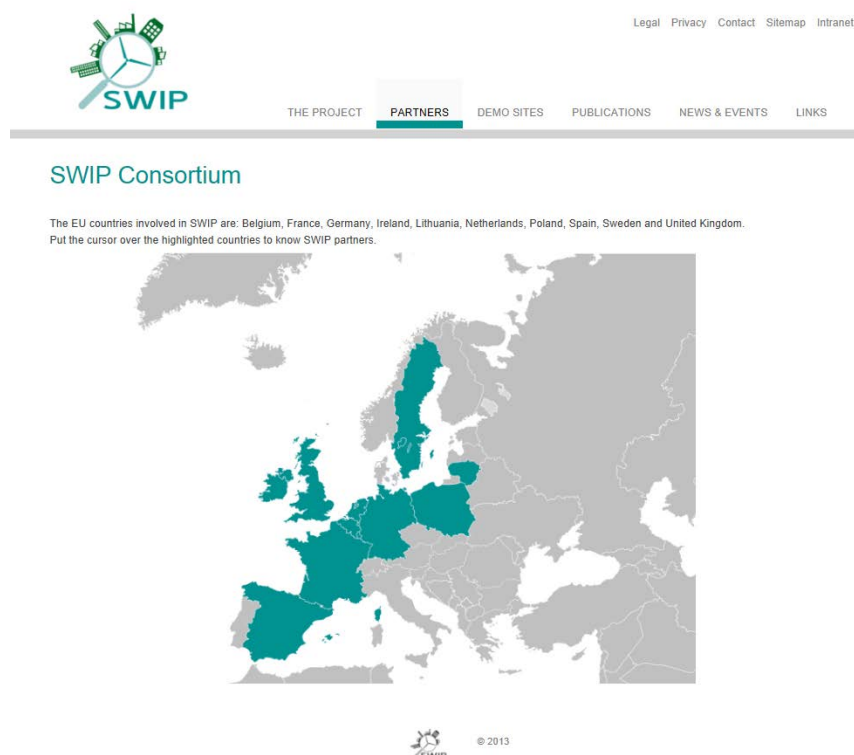


Figure 6. SWIP consortium view

2.4 Demo Sites

This section is subdivided in three sub-sections, one per demo-site of the project:

- Zaragoza
- Choczewo
- Borkowo

Figure 7 show the description of the demo site of Zaragoza as an example to show how the information is presented to the user of the website.

	Document:	9.2 SWIP website	
	Author:	CIRCE	Version: 1
	Reference:	D9.2	Date: 23/12/13



[Legal](#)
[Privacy](#)
[Contact](#)
[Sitemap](#)
[Intranet](#)

[THE PROJECT](#)
[PARTNERS](#)
[DEMO SITES](#)
[PUBLICATIONS](#)
[NEWS & EVENTS](#)
[LINKS](#)

Zaragoza, Spain

Description

The zero energy building in which the WT is going to be integrated, is currently under development within the framework of the FP7 project called NEED4B. The building will be located in Rio Ebro Campus in Zaragoza. This area brings together different Centres and Institutes of the University of Zaragoza as well as other research organizations, which constitute a place of reference in the Aragon region.

The building to be constructed within NEED4B will have 2.400 m2 and will be placed in a plot of 7.875 m2 inside the University Campus and next to the already existing CIRCE's eco-efficient building. It will constitute the second head office of CIRCE as well as the second example of energy efficient construction. The new headquarters will house individual and collective offices accommodating 140 people. Three laboratories will also be held in this new space: one for eco-efficiency in buildings, one for electrical protections and another one for electrical metrology.

Main drivers to join SWIP

The city of Zaragoza is an excellent place regarding wind resource and its exploitation. The wind blows intensely and continuously in this city, with an annual average speed of 19 km/h at 20 m of height. Spring and Winter are the most windy seasons but it is also interesting to highlight that in Summer there is a big amount of resource as well (for instance 19.4 km/h in July) that manifests the continuous disposal of this resource. The new building constitutes a suitable environment for the integration of RES, mainly small wind energy, as it is on the scope of the project and building concept itself. The new building will be an example of zero energy building, which aims to be highly replicable among Europe and worldwide by means of standard construction methodologies for these kind of buildings.

The new building, according to the NEED4B project timeline, will be finalized in July 2015. The building design will count with space for the integration of wind turbines. The schedule fits with SWIP project, as SWIP aims at installing the prototypes at the beginning of 2016, providing a long enough time gap in case of construction delays.

Performance within SWIP

The demonstration of SWIP in Zaragoza will represent the integration of an 3-4 kW horizontal axis wind turbine in a zeroenergy- building placed in an urban district within a university campus. The aim of this demonstration is showing a design integrated in the building infrastructure, which does not suppose a negative impact regarding the aesthetical environment where it is placed, including the following solutions to be tested in a real scenario:

- New horizontal axis blades design
- New costless PM generator
- Aesthetic solutions for the integration of SVTs into urban buildings
- Noise and vibration reduction solutions and elimination of vibration transmission into the building structure.
- Integration of the SCADA system and control for integration into buildings
- Wind resource assessment software validation

SWIP Replication potential

Zaragoza's weather is very common in most parts of north and center Europe so that, this demo-site is very representative regarding wind resource. Furthermore, setting the emplacement of the WT within a university district is a good way to begin with its integration in urban areas, preparing them for a future jump to the city center neighbourhoods. Replicability is at the core of both NEED4B and SWIP projects, enhancing the potential for future implementation into urban areas, new buildings construction, compliance of the EPBD recast, etc.

Pilot targets

The main target within Zaragoza demonstrator is to install and monitor the performance of the new small wind turbine developed in the framework of SWIP project, and compare real operation with the theoretical goals expected. Moreover, as a long wind resource assessment campaign has been carried out in the location, the new methodology for wind resource assessment in urban areas will be tested here, in order to improve and depurate it during the project execution.


© 2013



Technical sheet

- City Population: 701.887 inhabitants
- City Area: 396 km2
- Demo Neighbourhood: Rio Ebro Campus.
- Climate: Continental Mediterranean
- Use: Bussines, commerce, tourism, residential.

Figure 7. Zaragoza Demo site description

2.5 Publications

This section is broken down in three sub-sections:

- **Dissemination material:** All leaflets and posters and any dissemination material produced within the project will be uploaded in the public webpage within this sub-section.
- **Public deliverables:** All deliverable specifically marked as Public deliverables will be uploaded in the public webpage within this sub-section.
- **Publications:** the rest of publications as scientific paper, articles, etc... will be uploaded in the public webpage within this sub-section.

	Document:	9.2 SWIP website		
	Author:	CIRCE		Version: 1
	Reference:	D9.2		Date: 23/12/13

2.6 News & Events

All news related to the project or events of the project will be published within this section.

2.7 Links

This section offers links to other entities or works related to SWIP. Figure 8 shows an overview of the section.

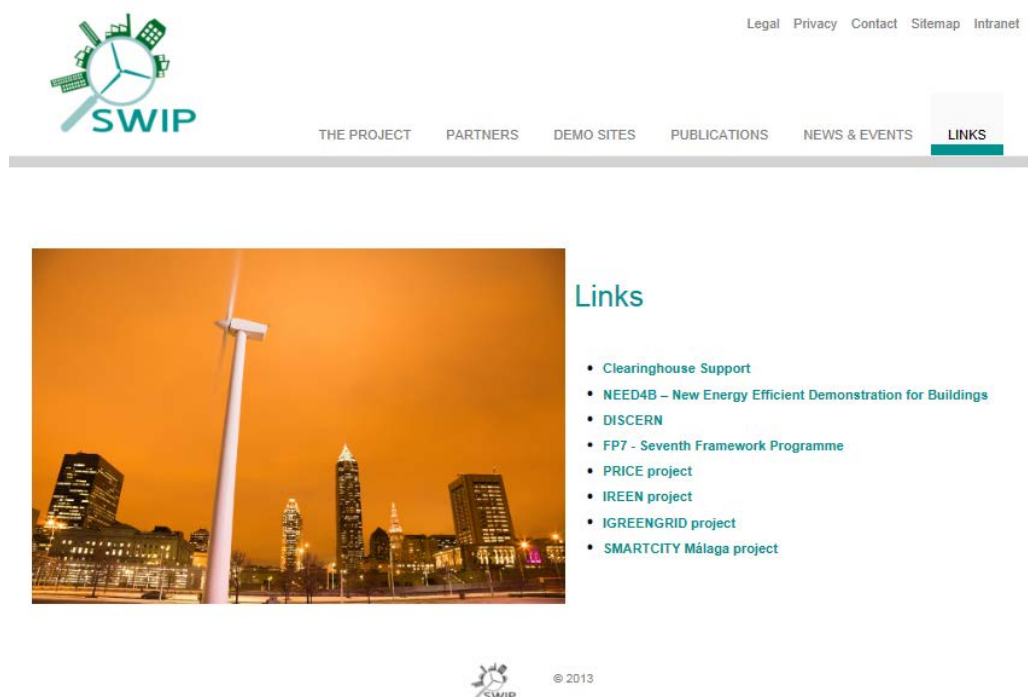


Figure 8. Links section

	Document:	9.2 SWIP website	
	Author:	CIRCE	
	Reference:	D9.2	Version: 1 Date: 23/12/13

3 Website's Intranet

The intranet will be used by SWIP consortium as a collaborative working space for developing and coordinate the project activities internally. A tool made specifically for FP7 projects called “EMDESK” is used. A user guide is available for all partners to understand how the support system tool works. As has been done with the public website, the main sections of the intranet are detailed in the following points.

3.1 Homepage

The homepage of the Intranet contains an overview of the whole project, where it is possible to see the involvement of your organization within the project, the overview of the status of the ongoing tasks and deliverables, as well as the upcoming events, a message wall where all partners can communicate, the latest activities done in the tool (such as documents uploaded, messages...) and a board with the recent CORDIS news. Figure 9 illustrates the intranet's homepage:

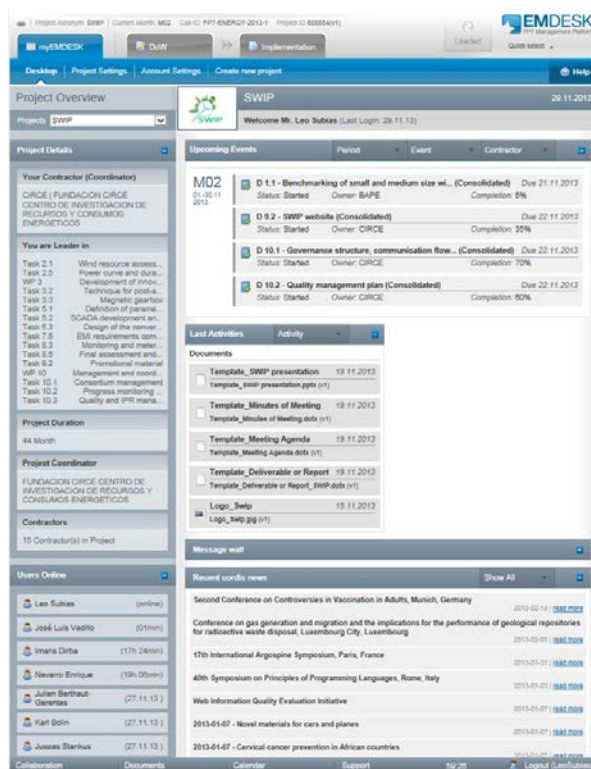


Figure 9. Intranet's homepage

	Document:	9.2 SWIP website	
	Author:	CIRCE	Version: 1
	Reference:	D9.2	Date: 23/12/13

3.2 Controlling

Within this section, the EMDESK tool allow to have a close control of the project with regard to the status of the different tasks, deliverables and milestones, as well as all economic aspects as well as the effort incurred so far within the project. In the following points the different functionalities of the tool are going to be described.

3.2.1 Status

In this section, the Gantt Chart is implemented. Within the Gantt Chart is possible to identify the tasks, work packages that the user organization is leading, those in which the user organization is involved as well as the due dates for deliverables and milestones. The reporting periods are also represented with a line crossing over the Gantt Chart. Figure 10 illustrates the view of the Status section for CIRCE.

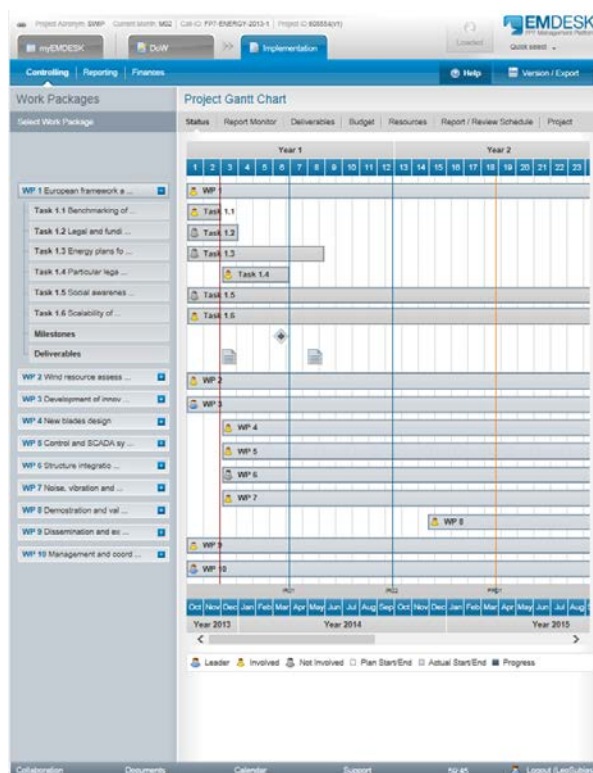


Figure 10. Overview of the Status section

3.2.2 Report monitor

This section helps all partners and the coordinator to develop the interim reports for intermediate control of the project as well as for the periodic reporting, allowing to all partners to share the information.

	Document:	9.2 SWIP website		
	Author:	CIRCE		
	Reference:	D9.2		
		Version:	1	
		Date:	23/12/13	

3.2.3 Deliverables

This section shows the percentage of completion, which should be introduced by the lead beneficiary of the document and the peer review process highlighting in which state (“achieved”, “not achieved” or “due soon”) is de document. The following picture illustrates an overview of the WP1.

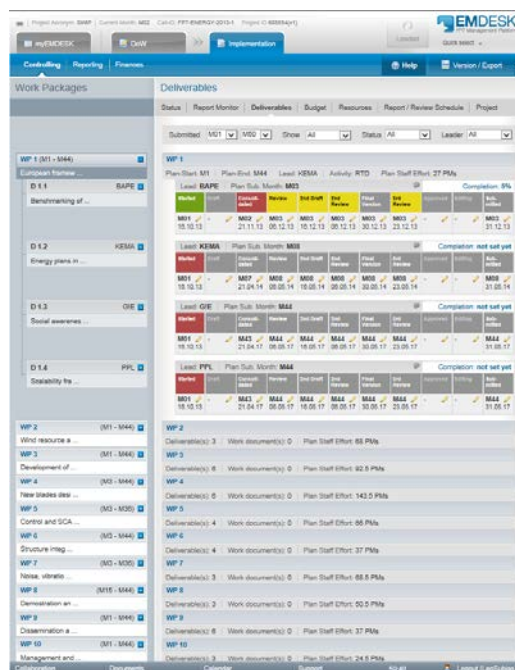


Figure 11. Overview of the Deliverable section

3.2.4 Budget

In this section all partners can upload all their estimated costs as well as their actual costs detailed by Research activities, Management, Demo and Other. Within each kind of activity the costs can be detailed per personnel, subcontracting, other (travel, other, consumables, and equipment) and indirect costs.

3.2.5 Resources

In this section all partners report their effort used and their planned effort. This reporting can be done with an accuracy of task level. Below can be seen an overview of the section.

	Document:	9.2 SWIP website	
	Author:	CIRCE	
	Reference:	D9.2	Version: 1 Date: 23/12/13

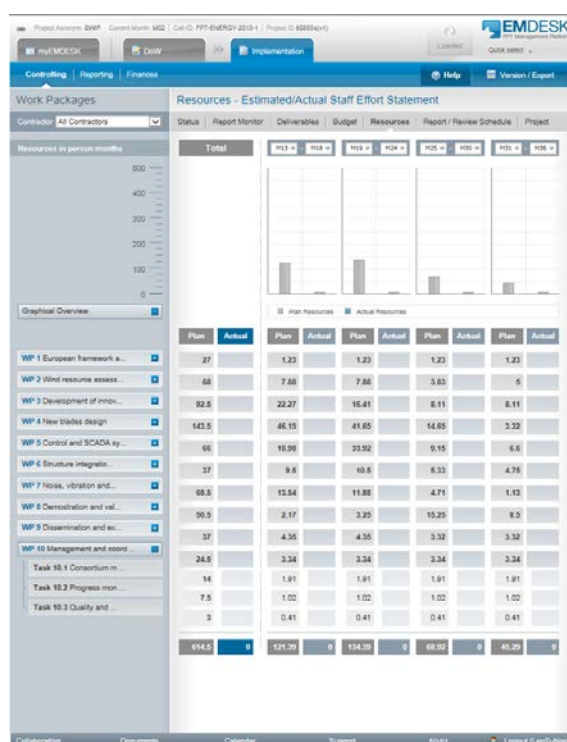


Figure 12. Overview of the Resources section

3.2.6 Report/Review schedule

This section summarizes all information contained within the previous sections and gives an overview of the project status.

3.2.7 Project

A brief description of the project is available within this section. This section also contains the funding scheme of the project as well as the call details and the logo of the project.

3.3 Reporting

3.3.1 Progress

This section contains the structure requested by the European Commission for the Progress Report of the reporting periods with a “Publishable Summary”, “Project objectives for the period”, “Project management over the period” and “Overview of the progress” per WP.

The different sub-sections will be filled in order to create the report to be delivered to the EC.

3.3.2 Resources

Within this section, partners will be able to enter their effort in Person/Month incurred within the period. This section shows the Planned Person month vs. Actual Person Month.

	Document:	9.2 SWIP website	
	Author:	CIRCE	Version: 1
	Reference:	D9.2	Date: 23/12/13

3.3.3 Costs

Within this section the financial information of each partner will be entered, this information will be the same information to be entered within the Participant portal.

3.3.4 Deliverables

This section allows partners to enter the information of the percentage of completion of the ongoing deliverables with a statement of the work deployed so far. Within each deliverable is also possible to see the peer review process with the due dates of each stage. Documents related to each deliverable can be also uploaded in this section.

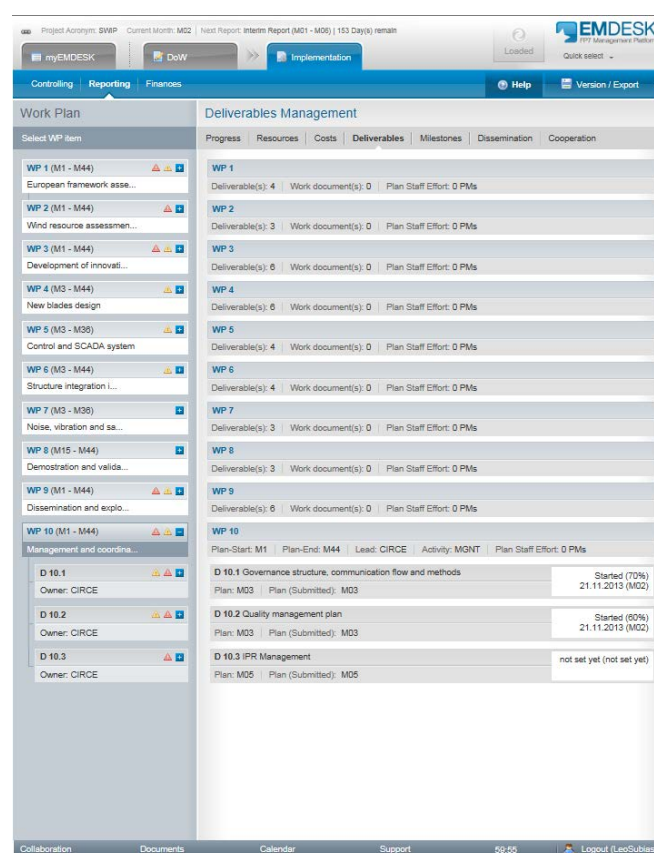


Figure 13. Overview of the Deliverables section

3.3.5 Milestones

The Milestones sub-section contains all milestones of the project with the actual due date and the description of the milestone.

3.3.6 Dissemination

Within this section all publications, patents, exploitable foreground, disseminations and standardizations will be placed.

	Document:	9.2 SWIP website	
	Author:	CIRCE	Version: 1
	Reference:	D9.2	Date: 23/12/13

3.3.7 Cooperation

Within this section all project events that have been created in the calendar are collected over the corresponding periodic report & interim report.

3.4 Finances

3.4.1 EC Payments

This section collects all Project funding scheme per partner, it is also possible to see all funds that have been paid by the EC and all funds that are left to be paid according to DoW.

3.4.2 Payments to Contractors

Within this section it is possible to check all funds per partner and all payments that have been done so far as well as the total funds already transferred.

3.4.3 Payments Summary

This section gives an overview of the funding with the Total EC Payment, the payments to participants that have been done so far and the balance of funds to be paid.

Project Acronym: SWIP

Current Month: M02

Call-ID: FP7-ENERGY-2013-1

Project ID 60854(v1)

myEMDESK

DoW

Implementation

EMDESK

FP7 Management Platform

Quick select

Controlling

Reporting

Finances

Help

Version / Export

Contractors

Summary of payments

Select EC Payment

All Payments

EC Payments

Payments to Contractors

Payment Summary

	EC Payment Total	Payment to participants	to be paid balance
P 1 CIRCE	838,004.40 €	405,035.46 €	432,968.94 €
P 2 PPL	446,481.00 €	215,799.05 €	230,681.95 €
P 3 KTH	577,257.00 €	279,007.45 €	298,249.55 €
P 4 FORES	399,440.00 €	193,062.67 €	206,377.33 €
P 5 METEODYN	322,237.00 €	155,747.79 €	166,489.21 €
P 6 KEMA	253,342.00 €	122,448.63 €	130,893.37 €
P 7 GIE	210,954.00 €	101,961.10 €	108,992.90 €
P 8 SAL	363,377.05 €	175,632.24 €	187,744.81 €
P 9 ULEEDS	503,371.80 €	243,296.37 €	260,075.43 €
P 10 DARMS	446,640.80 €	215,876.39 €	230,764.41 €
P 11 BAPE	207,394.30 €	100,240.58 €	107,153.72 €
P 12 SOLUTE	245,210.00 €	118,518.17 €	126,691.83 €
P 13 TCD	119,720.00 €	57,864.67 €	61,855.33 €
P 14 VMT	0.00 €	0.00 €	0.00 €
P 15 CEIS	0.00 €	0.00 €	0.00 €
	4,933,429.35 €	2,384,490.57 €	2,548,938.78 €

Collaboration

Documents

Calendar

Support

50/16

Logout (LeoSouza)

Figure 14. Overview of the Payments summary section

	Document:	9.2 SWIP website	
	Author:	CIRCE	Version: 1
	Reference:	D9.2	Date: 23/12/13

3.5 Collaboration

This menu is located at the bottom of the screen and allows partners to find contact information of all partners involved in the project, mailing lists, it also allows to send e-mails directly from the Intranet tool, between others.

3.5.1 Contacts

Within this section, it is possible to find all contact information from all persons involved in the project broken down by partners.

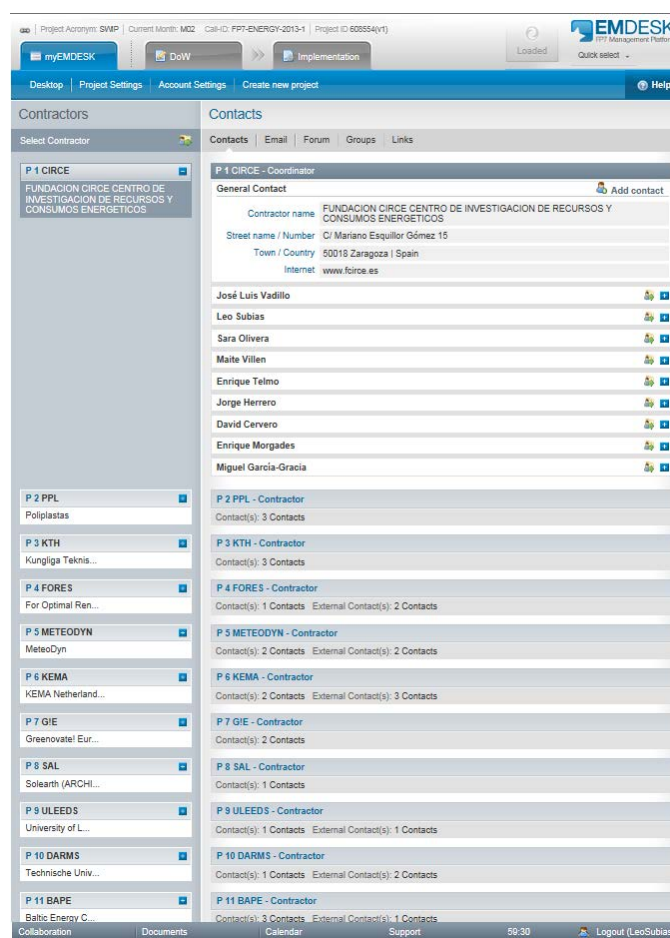


Figure 15. Overview of the Contacts section

3.5.2 E-mail

Within this section it is possible to send e-mails directly via the Intranet tool. Thus, all communications using this system keep recorded within the tool being able to check them when needed. This section has two differentiate parts, the "Inbox" where all e-mails received through the tool are recorded and the "Outbox" where all e-mails sent through the tool are recorded.

	Document:	9.2 SWIP website		
	Author:	CIRCE		Version: 1
	Reference:	D9.2		Date: 23/12/13

3.5.3 Forum

This section allows partners to create groups of discussion for different topics and to share the comments in a different way than e-mailing.

3.5.4 Groups

Within this section, the mailing lists are created. The current mailing lists are:

- Administrative issues list
- Technical issues list
- General Assembly list
- Steering Committee list
- Technical group list
- WP1, WP2... to WP9 list
- General list

In case that there will be a need to create a new mailing list (i.e.: to develop works within a specific deliverable where not all WP partners are involved), it is easier to create a new mailing list adding all persons from the different organizations that already have been registered within the tool.

3.5.5 Links

In this part useful links can be included and recorded for further consultation.

3.6 Documents

This menu allows storing all documents and files to be used in the project. A structure of folders has been created based on the structure of the project. Which means that it has been created a General folder where all project related documents such as DoW, GPF, Grant Agreement ... are recorded and a structure of WPs and Deliverables per WPs where all working files and documents will be stored as well as the final version of the deliverables. Next figure shows the folder structure:

	Document:	9.2 SWIP website	
	Author:	CIRCE	
	Reference:	D9.2	Version: 1 Date: 23/12/13

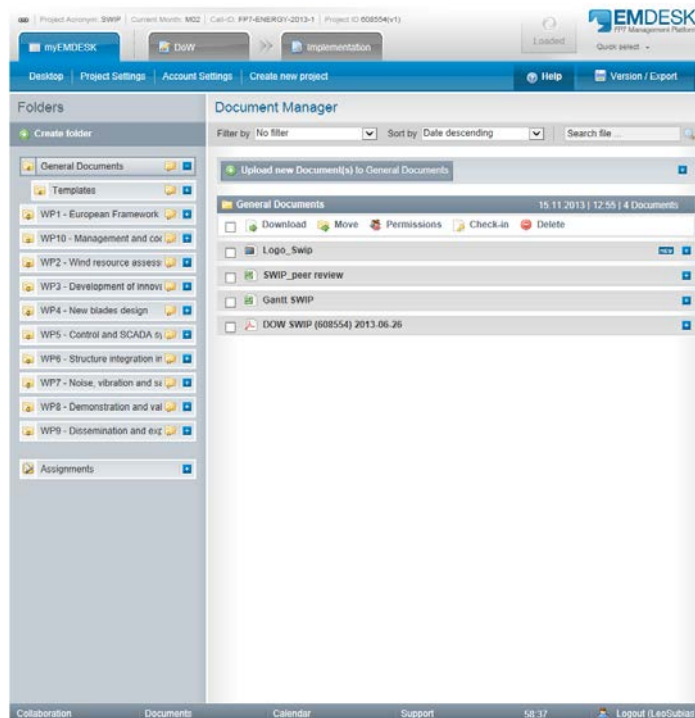



Figure 16. Overview of the Documents section

3.7 Calendar

This section allows creating events, which keep recorded within the tool for further consultation. It is possible to add attachments to the events, so that all working documents or files to be used within the meeting can be stored within the created appointment in the tool. It also allows uploading documents after the meeting, in the way that all meeting minutes can be attached to the appointment.

	Document:	9.2 SWIP website		
	Author:	CIRCE		Version: 1
	Reference:	D9.2		Date: 23/12/13

4 Conclusions

SWIP website has been developed on the basis of a double purpose.

The first one is having a public space in which all the information related with the project is given, being a dissemination channel that will be periodically updated and where the documents and project results will be shown. This public information node has been developed under an intuitive and user-friendly environment, providing quite but well-structured information so that the project scope and objectives may be understood in a few minutes by surfing through the web.

The second one is serving as a support for the project development and management to all the partners involved in SWIP project. This is made by the project's intranet, a support tool specifically tailored for collaborative projects under the 7th Framework Programme that facilitates the collaborative work among partners. This intranet allows the partners sharing documents, monitoring the work done and eases the reporting to the EC.

SWIP web is a collaborative space made for a collaborative project, which will provide support for the project final success.